

This is the last annual report from the Minnesota Governor's Council on Geographic Information.

Created in 1991 by an Executive Order from Governor Arne Carlson, the Council operated effectively for 18 years. This report celebrates the Council's major lifetime accomplishments and summarizes the highlights of the past year.

Our major accomplishment in 2009 was also our undoing. We have been working for several years to create a **Minnesota Geospatial Information Office**. Our vision became a Governor Tim Pawlenty Drive to Excellence (DTE) initiative in 2008. Based upon a DTE recommendation, legislation created the new office (MnGeo) in 2009 and replaced the Governor's Council with a new advisory structure.

MnGeo will coordinate geospatial activities across Minnesota. It will operate at two levels:

state government and **statewide**.

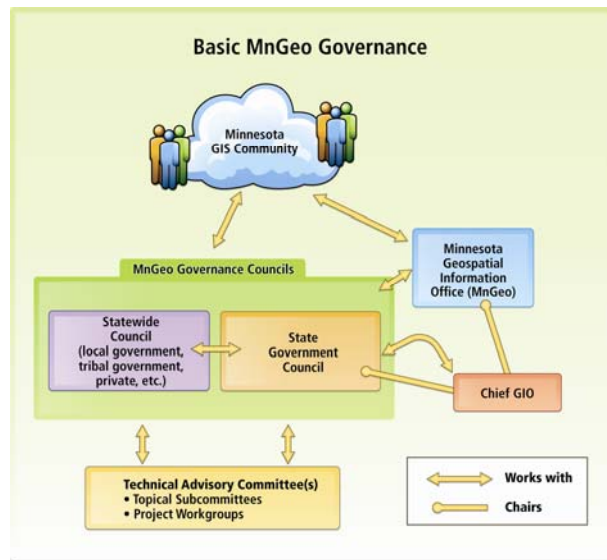
At the state government level, it has the power to make agencies work together. At the statewide level, it will work with many others to encourage cooperation across the state. Two advisory councils will provide guidance, one at each level.



The Strategic Planning Committee and former Council committee chairs have acted as an interim transition advisory team until the state government and statewide councils can be established.

LIFETIME ACCOMPLISHMENTS

The Governor's Council accomplished much during its 18 year existence. Perhaps the greatest of these was helping to build a GIS community in Minnesota that is second to none. Representatives of state agencies, local and regional government, the federal government, academia, and the private and non-profit sector worked together for the common good.



Artwork courtesy of ESRI

We worked in four important areas. First, we **helped people get the data they need**. Through surveys and public meetings we came to understand those needs. We developed plans for data development in eight key areas. We were able to make considerable progress in four of them: aerial photography, elevation, hydrography, and soil maps. These data and more are available through the Minnesota Geographic Data Clearinghouse, which we conceived and then encouraged the Land Management Information Center (LMIC) to implement.

Second, we **promoted best practices and standards**. We developed a process for establishing state standards, then developed and implemented 10 of them, ranging from ID codes for cities and townships to authorization of the U.S. National Grid as a preferred method of providing location information. We proposed changes that improved draft federal standards and then developed implementation guidelines for Minnesota agencies and institutions. For best practices, we documented unofficial conventions used by public agencies in Minnesota and recommended *Governor's Commendations* for projects that provided value beyond the home organization.

Third, we **provided information and training**. We wrote articles for the GIS community in their *Mn GIS/LIS News* and for the broader community in publications like *Minnesota Counties*. We gave presentations and workshops to statewide and national audiences at numerous GIS, IT, and emergency management events.

Finally, we **gave policy and technical advice**. We advised Minnesota organizations on geographic information and technology – especially the Minnesota Office of Enterprise Technology and the Land Management Information Center. We worked with the Minnesota Alliance for Geographic Education to get geography and GIS into the graduation requirements for Minnesota schools. Since its beginning, the council has commissioned studies and publications to define information needs and priorities, proposed an enterprise Geographic Information architecture, and finally, worked with the *Drive to Excellence* team to define the nature and structure for the new coordinating office, MnGeo.

FY 2009 ACCOMPLISHMENTS

During 2008-09, the Council worked through seven committees. They will continue as technical advisory committees under MnGeo.

Digital Elevation

Works for statewide accurate and consistent elevation data.

Monitored technical advances in data development and shared them via meetings, presentations, and website. Supported legislation that provided \$5.6 million for new high-resolution data, bringing the state nearer to full coverage.

Emergency Preparedness

Works to bring together geospatial and emergency management communities.

Continued to develop nation-leading programs for U.S. National Grid implementation, virtual workspace collaboration, and training of GIS personnel in

emergency management practices and procedures. Focused efforts by deploying GIS *Go Teams* to support the Republican National Convention (RNC) and Red River Valley flood response. The RNC effort was the first national use of local GIS support inside the U.S. Secret Service's Multi-Agency Communications Center.

Hydrography

Works to develop statewide hydrography data for Minnesota consistent with the National Hydrography Dataset (NHD).

Received federal certification for Minnesota portion of the national Watershed Boundary Dataset. Became first state to begin working with USGS to integrate storm sewer data into the NHD.

Land Records Modernization

Works with counties and others to develop statewide digital parcel maps.

Focused committee priorities and changed its name to Digital Cadastral Data Committee. Began documenting the benefits of having digital parcel maps. New work aimed at developing parcel attributes that should be reported in a standard format and coordinating state agency efforts to access local parcel data.

Outreach

Disseminates the work of the Council.

During 2008-09, focused on the strategic plan and the Drive to Excellence, but also maintained close connections with other committees and their work.

Standards

Facilitates sharing of data and business practices.

Finalized ID standard for Cities, Townships, and Unorganized Territories. Also adopted the U.S. National Grid as a cartographic standard on appropriate map products in Minnesota.

Strategic Planning

Works to improve governance of GIS in Minnesota.

Worked closely with the Drive to Excellence initiative that led to the new MnGeo. Was especially helpful in creating guidelines for the geospatial advisory bodies.

Council members represent a broad cross-section of organizations that benefit from coordination of geospatial technology and data.

FY09 Appointed Members

David Brandt, Washington County
Curtis Carlson, Regional MLS of Minnesota, Inc.
Will Craig (Vice-chair), University of Minnesota
Mike Dolbow, MN Dept. of Agriculture
Kris Eide, MN Dept. of Public Safety
Rick Gelbmann (Chair), Metropolitan Council
Jeff Grussing, United Services Group
Joshua Gumm, Scott County
Tim Loesch, MN Dept. of Natural Resources
Tom Mathisen, City of Crystal
Richard Morey, MN Dept. of Transportation
Tim Ogg, MN Board of Water and Soil Resources
Victoria Reinhardt, Ramsey County
Tad Schindler, MN Pollution Control Agency
Gerry Sjerven, Natural Resources Research Institute
Mark Sloan, Clay County
Sally Wakefield, 1000 Friends of Minnesota
Brenda Zachman, Farm Service Agency, USDA

FY09 Ex-Officio Members

David Arbeit, Land Management Information Center
Rebecca Foster, MN GIS/LIS Consortium
Lee Meilleur, Legislative Coordinating Commission
Eileen Quam, MN Office of Enterprise Technology
Ron Wencl, U.S. Geological Survey



**MINNESOTA GOVERNOR'S COUNCIL
ON GEOGRAPHIC INFORMATION**
658 Cedar Street, Room 300
St. Paul, MN 55155
e-mail: gis.council@state.mn.us
www.gis.state.mn.us

**FY 2009
ANNUAL REPORT**

**Minnesota
Governor's Council
on Geographic
Information**